

ICAN BioCollection

A certified Biobank within
La Pitié-Salpêtrière Hospital



IHU
ICAN

Foundation for Innovation
in Cardiometabolism
and Nutrition

Located within Pitié-Salpêtrière Hospital,

the ICAN Biological Resource Center is an expert in managing human biological samples in the frame of research projects, particularly focusing on cardiometabolic and nutritional diseases.

The ICAN BioCollection helps investigators to structure their projects and to set up the collection process in compliance with regulatory requirements. The team offers personalised support according to the needs of the project and ensures the centralised management, conservation and availability of human biological samples for academic and industrial research projects.



A COMPREHENSIVE OFFER TO MEET YOUR NEEDS

1. A biological sample management service next to the ICAN Clinical Investigation platform

- Preparation of sampling kits
- Receipt of samples
- Sample preparation and management: serum, plasma, urine, tissue, PBMC, circulating and cellular DNA and RNA extraction
- Fecal aliquot
- Non-invasive labelling of samples (use of tube, QR code)
- Sample inventory

2. Safe sample storage

- Various storage temperatures available:
- 20 °C, - 80 °C, - 150 °C
- Temperature monitoring report
- Managing of back up samples in separated freezers or sites
- Storage capacity : 1 million samples
- 24/7 temperature monitoring; on-call during the day, weekends and public holidays

3. Transfer of biological samples

- Preparation of samples for shipment
- Managing of temperature controlled shipments

4. Provision of biological resources

- The CRB houses more than 10 biocollections (over 60,000 patient samples). Biological resources are available for collaborative projects with public and private scientific partners (Catalogue available on the website www.ihuican.org).

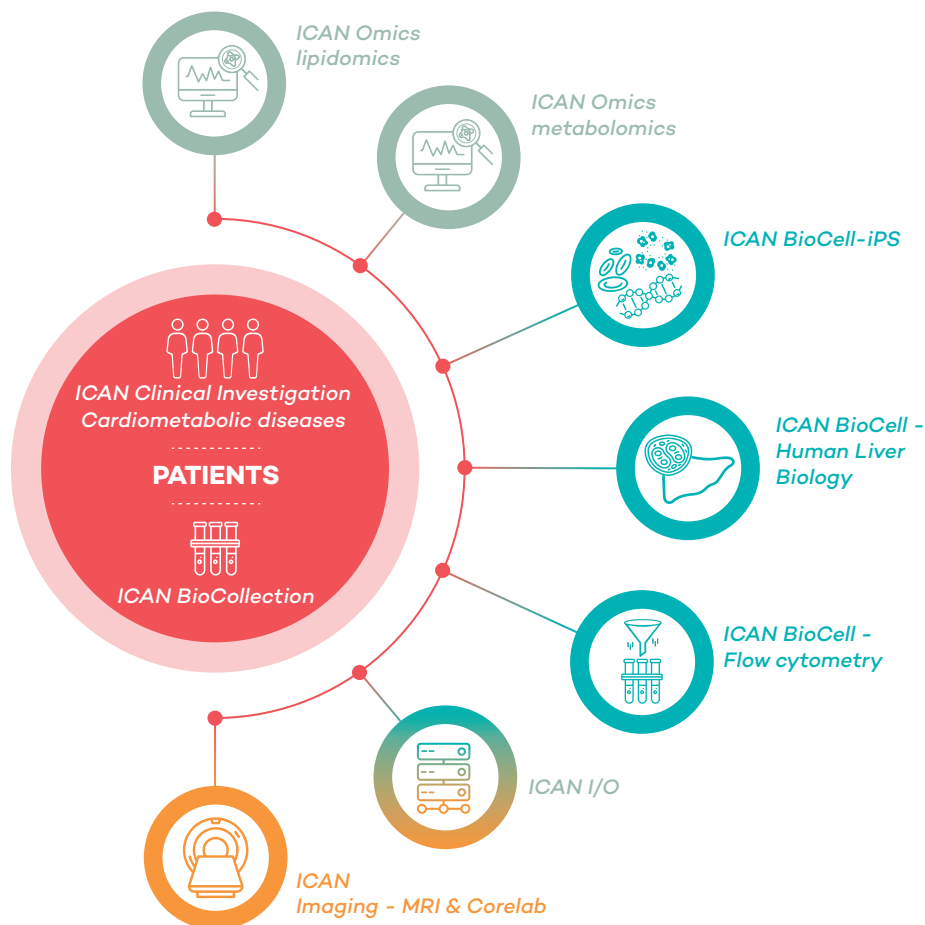
ICAN BIOCOLLECTION AT THE HEART OF A UNIQUE NETWORK

Its expertise and network make ICAN BioCollection a privileged partner in the setting up of projects involving the collect, conservation and return of biological samples.

The ICAN BioCollection Biobank works in close collaboration with ICAN Clinical Investigation, the clinical investigation platform of the IHU ICAN specialised in setting up and monitoring clinical studies, but also with the scientific platforms of the IHU ICAN and clinicians at Pitié-Salpêtrière Hospital. ICAN BioCollection is also a partner of the Biological Resources Platform (PRB) of Pitié-Salpêtrière Hospital.



THE IHU ICAN PLATFORMS, A COMPLETE AND INTEGRATED TRANSLATIONAL RESEARCH NETWORK



KEY FIGURES IN 2021



26

Scientific cohorts including 10 biocollections available for scientific collaborations



24

Phase II and III clinical studies



7,000

Samples prepared each year



1,500

Samples received each year



6,000

Samples made available each year



The Biobank ICAN BioCollection is integrated into the IHU ICAN's network of scientific platforms, allowing for significant synergy in the implementation of numerous projects:

- Metabolomic and lipidomic analyses,
- Cell sorting and analysis,
- Characterisation of cytokines and chemokines,
- Differentiation and characterisation of iPS,
- Preparation of human liver tissue and cells, development of *ex vivo* models of liver pathologies.



THEIR TESTIMONIALS



Prof. Vlad RATZIU

Gastro-Enterologist - PU/PH IN Hepathology



Since 2015, ICAN BioCollection has been supporting my team with managing biocollections for our studies on metabolic steatosis of the liver. Recently, **we have strengthened our collaboration by entrusting ICAN BioCollection with the management of samples collected** in the framework of industrial studies in which our Center is involved. Quality, responsiveness and availability make the CRB ICAN BioCollection our only partner for managing and preserving biological samples."



Dr Antonio GALLO

Specialist in internal medicine



I asked ICAN BioCollection to manage the samples collected for my research on familial hypercholesterolaemia. Through this collaboration, I have established easily accessible collections of biological samples for future collaborations and projects. **The flexibility and complementary nature of the services offered are a valuable support to my research activity and the integration with ICAN's Clinical Investigation platform guarantees a high level of responsiveness in research projects."**



YOUR MAIN POINT OF CONTACT

Head of ICAN BioCollection Sara CIPRIANI, PhD

✉ CRB.ICANCOLLECTION@ihuican.org

📞 Laboratory +33 (0)1 84 82 74 05

📞 Office +33 (0)1 84 82 77 69

IHU ICAN
Pitié-Salpêtrière Hospital
Pavillon Claude Bernard
47-83 boulevard de l'Hôpital, 75013 PARIS
www.ihuican.org

 **IHU ICAN**
BioCell

Human Liver Biology