

## Multidisciplinary projects

**14 projects in hepatology** and **3 European consortiums** on NASH  
Prof. V. Ratzu, Dr. R. Pais

**18 projects in rhythmology**  
Prof. E. Gandjbakhch, Dr. N. Badenco, Dr. M. Laredo

**7 projects in endocrinology** and **cardiovascular prevention**  
Prof. E. Bruckert, Dr. A. Gallo, Dr. S. Saheb, Prof. C. Vigouroux

**3 projects in rare cardiomyopathy**  
Pr. P. Charron

**3 projects in cardiac imaging**  
Prof. A. Redheuil, Prof. R. Isnard

**1 project in cardiac surgery**  
Prof. P. Leprince, Dr. G. Lebreton

**7 projects in nutrition**  
Prof. J. M. Oppert, Prof. C. Poitou Bernert, Dr C. Ciangura



## AN EXPERT TEAM READY TO SUPPORT YOUR PROJECTS

**Head of Clinical Investigation Platform**  
Jeanne Haidar

**Platform Deputy Manager**  
Choukri Triqui

**Clinical Research Referring Physician**  
Dr Raluca Pais  
Dr Emmanuelle Bégot

**Clinical Research Nurses**  
Aurélie Fontanier  
Thomas Maurel

**Clinical Study Coordinators / Clinical Research Associates**  
Selma Abid, Carole Bernhardt, Anissa Bouabdallah, Stéphanie Combet, Hanane Guermoudi, Hayet Iddir, Valentine Lemoine, Majjid Oudihat, Sophie Saun, Maryse Sedji

**1 medical electroradiology technician**



## YOUR DEDICATED CONTACTS ICAN CLINICAL INVESTIGATION

Head of Clinical Investigation Platform:

Jeanne Haidar

✉ [j.haidar@ihuican.org](mailto:j.haidar@ihuican.org)

☎ 01 84 82 77 80

Deputy manager:

Choukri Triqui

✉ [c.triqui@ihuican.org](mailto:c.triqui@ihuican.org)

☎ 01 42 16 58 14

## OUR PRIMARY PARTNERS

**Founders:** AP-HP/DRCI, Inserm, Sorbonne University

**Academic partners:** NFSA, French Society of Cardiology, European Society of Cardiology

**Contract Research Organization (CRO):** Covance, HealthSciences, ICON, IQVIA, Medpace, Parexel, PPD, PRA, Syneos Health,

**Hospital partnerships:** Annecy, Grenoble, Lille, Lyon, Marseille, Nancy, Nantes, Poitiers, Saint-Etienne

**Pharmaceutical companies:** Abbott, Allergan, AMGEN, AstraZeneca, Boehringer Ingelheim, Celgene, Enanta Pharmaceuticals, ENYO Pharma, Galacto Biotech, Galmed Pharmaceuticals, Genetech, GENFIT, Intercept Pharmaceuticals, Inventiva, Ionis Pharmaceuticals, Lilly, Madrigal Pharmaceuticals, MSD, NGM Biopharmaceuticals, Novartis, Novo Nordisk, Regeneron Pharmaceuticals, Roche, Sanofi,

**Medical device companies:** Biotronik, Boston Scientific, Medtronic

### ICAN Clinical Investigation

Pitié-Salpêtrière Hospital  
E3M Institute  
47-83 boulevard de l'Hôpital, 75013 PARIS  
[www.ihuican.org](http://www.ihuican.org)



© ICAN - May 2022

## THE IHU ICAN'S CLINICAL INVESTIGATION PLATFORM AT YOUR SERVICE





## Crucial elements for the success of your project



### MADE TO MEASURE

A single point of contact who supervises your project from feasibility to completion of the study



### EXPERTISE

Solid expertise using highly qualified clinical study coordinators in the various medical disciplines



### NETWORK

Working as a network through close links with the various departments of Pitié-Salpêtrière and the Department of Clinical Research and Innovation (DCRI)



### AGILITY

Adaptation of project resources according to needs and inclusion constraints while respecting the project schedule



### CONSIDERATION

Consideration is negotiated as fairly as possible and made fully available to investigators on a dedicated account

Located in the premises of the IE3M building (Institute of Endocrinology, Metabolic Diseases and Internal Medicine) at the heart of the site of Hospital Pitié-Salpêtrière, **ICAN Clinical Investigation is the clinical investigation platform for the IHU ICAN dedicated to biomedical research.** Experts in cardiometabolic diseases, the teams of ICAN Clinical Investigation support academic or industrial sponsors in setting up their projects and contribute to the smooth running of clinical trials, from the feasibility stage and selection of the center to the closing of the project.

**168**  
medical doctors in the IHU-ICAN network

**55**  
clinical studies underway of which 28 are academic and 27 are industrial

**4**  
innovative treatment plans

**1**  
dedicated medical team  
2 referring physicians • 2 clinical research nurses • 10 study coordinators • 1 medical electroradiology technician

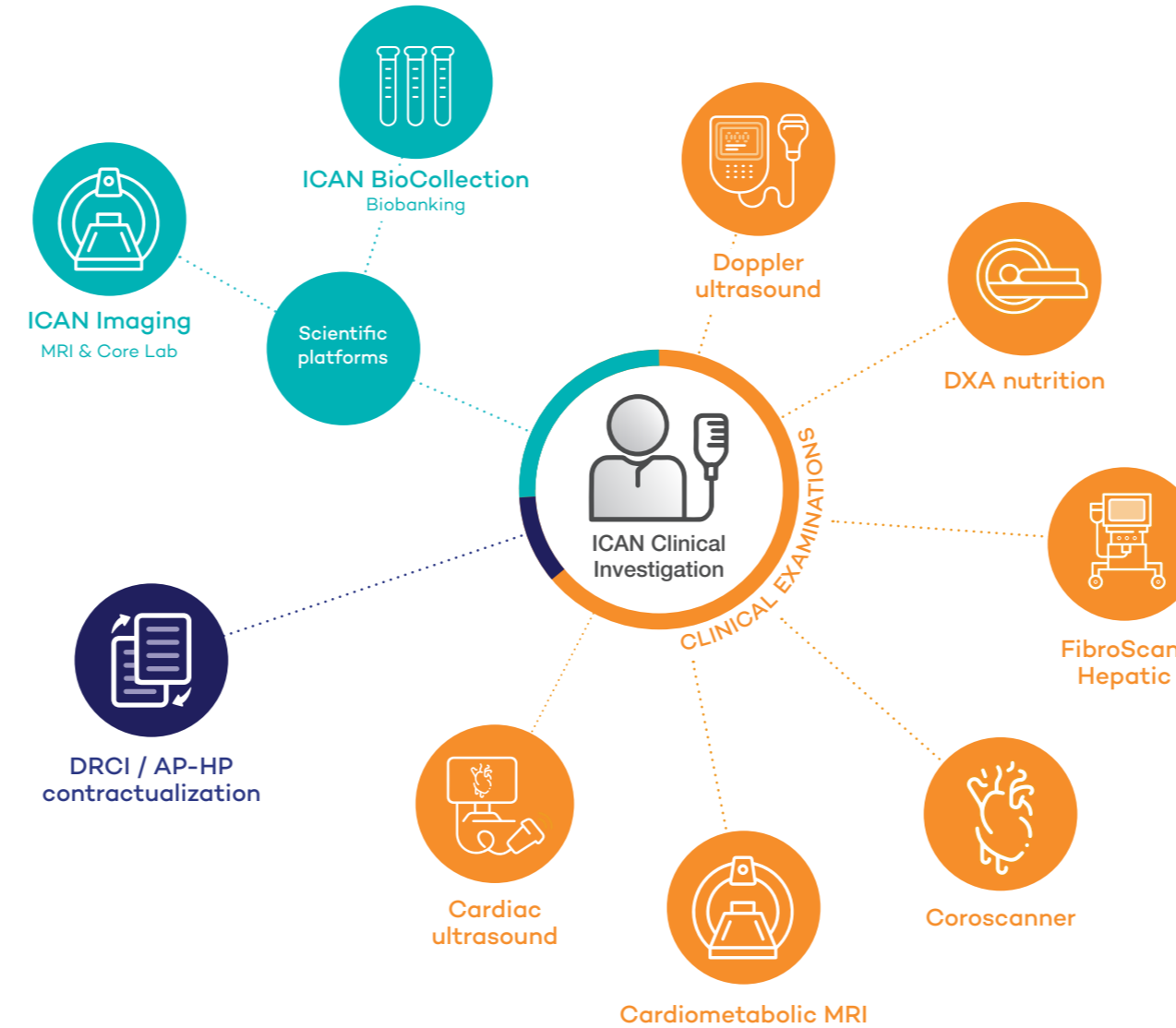
**+ 600**  
patients included in clinical studies and cohorts in 2020

**+ 400**  
patients have received an innovative molecule treatment

## A complete service for your clinical studies

Due to its unique location within the largest public hospital in Europe, **ICAN Clinical Investigation** is the chosen intermediary for conducting innovative academic or industrial clinical studies on cardiometabolism.

**ICAN Clinical Investigation** coordinates the various departments present within the Pitié-Salpêtrière.



## The ICAN CLINICAL INVESTIGATION platform expertise at every stage of your study

### 1. Feasibility study and sizing of the research project

- Support sizing the project: number of patients, number and types of examinations, assessment of human resources needs
- Legal support in the contracting of studies using the expertise of the Legal
- Compliance and Data Policy Department of the IHU ICAN
- Assistance in setting up your project from the IHU ICAN Department for the Innovation and Valorization of Research

### 2. Analysis of budgetary needs

- Accurate assessment of additional costs
- Negotiation of the amount of consideration

### 3. Setting up the study

#### Optimization of recruitment

- Telephone pre-screening, verification of inclusion and exclusion criteria
- Highly targeted screening "consultations, out patient, full hospitalizations, cohorts..."
- Assistance to investigators during inclusion and follow-up visit

#### A patient circuit and dedicated sampling

- Management and organization of the patient circuit among the various departments
- Preparation of the roadmap and source documents
- Samples: monitoring the quality of samples, storage

- Immediate proximity to the ICAN BioCollection Biological Resource Center (ISO certifications 9001 and NF S 96-900)

#### Data quality and responsiveness

- Completion of the eCRF within the required deadlines
- Annual statistical declaration of health establishments (SAE) within 24 hours, with regular monitoring
- Update of investigator files
- Reporting throughout the study
- Continuity of inclusions and project monitoring through back-up study coordinators
- Reporting throughout the study to the sponsor
- Monitoring of the budget and invoicing

### 4. Closing of the study

- Closure and archiving of documents at the end of the study
- Management of final queries

### 5. Invoicing of projects and investigator fees

- Monitoring of compensation intended for project leaders
- Flexibility in the use of compensation with a dedicated IHU ICAN investigator account